

MVSI 36 ELECTRIC VIBRATOR SERIES

three-phase

2 poles		
Hz	50	60
RPM	3000	3600



DESCRIPTION						MECHANICAL FEATURES						ELECTRICAL FEATURES			
Part Number	Model	Design	Frame Size	SP	Ex I/2D Temp. Class	Static Moment* in-lbs		Centrifugal Force lbs		Weight lbs		Power Output HP		Max Current A	
						50 Hz	60 Hz	50 Hz	60 Hz	50 Hz	60 Hz	50 Hz	60 Hz	400 V 50 Hz	460 V 60 Hz
600311	MVSI 36-380	S02	00	•	120°C	1.0	1.0	266	383	12.3	12.3	0.18	0.18	0.35	0.30
600312	MVSI 36-480	S02	01	•	120°C	1.8	1.3	464	480	14.1	13.6	0.18	0.18	0.35	0.30
600313	MVSI 36-660	S02	10	•	120°C	2.6	1.8	669	653	21.3	20.2	0.24	0.26	0.60	0.50
600314	MVSI 36-1050	S02	20	•	120°C	4.3	2.8	1107	1036	32.6	30.4	0.44	0.53	0.80	0.75
600366	MVSI 36-1500	S02	20	•	120°C	6.3	-	1615	-	33.2	-	0.44	-	0.80	-
600381	MVSI 36-1680	S02	30	•	120°C	6.8	4.5	1727	1659	46.2	44.0	0.67	0.71	1.10	1.00
600513	MVSI 36-2530	S02	35	•	120°C	9.6	6.3	2431	2334	50.6	48.4	1.1	1.2	1.75	1.75
600491	MVSI 36-2900	S08	AF33	•	200°C	11.1	8.0	2838	2919	59.4	56.5	1.4	1.4	2.10	1.90
600504	MVSI 36-3500	S08	AF33	•	200°C	12.7	9.6	3234	3509	55.7	52.8	1.4	1.4	2.10	1.90
600502	MVSI 36-3280	S02	50	•	200°C	13.3	8.9	3399	3263	72.6	69.3	1.5	1.9	2.30	2.00
600503	MVSI 36-4080	S02	50	•	200°C	15.6	11.1	3964	4077	74.8	71.5	2.0	2.1	3.30	2.90
600256	MVSI 36-4100	S90	AF50	•	200°C	17.8	11.1	4530	4077	107	102	2.2	2.2	3.50	3.00
600257	MVSI 36-4910	S90	AF50	•	200°C	20.0	13.3	5095	4893	109	104	2.2	2.2	3.50	3.00
600470	MVSI 36-6860	S02	AF70	•	135°C	29.9	18.7	7605	6846	207	198	4.5	4.6	6.50	5.60
600471	MVSI 36-8240	S02	AF70	•	135°C	33.6	22.4	8558	8217	211	202	4.5	4.6	6.50	5.60
600472	MVSI 36-11000	S02	AF70	•	135°C	44.8	29.9	11411	10954	240	231	5.0	5.7	7.60	6.90
600276	MVSI 36-14000	S02	90	•	135°C	54.8	38.5	13985	14124	405	392	6.2	6.1	9.20	8.00
600201	MVSI 36-20000	S90	95	-	135°C	77.8	53.8	19815	19734	473	462	10.9	10.1	18.0	13.0

CSA Approval for Class I, Division 2, Groups A, B, C and D hazardous locations. Available upon request.

Product approved for European Directive 94/9/EC (EN 61241-0, EN 61241-1): ATEX II2D, tD A21 IP66 (temperature class detailed in table).

All listed products are in compliance with GOST R 51330.0-99, GOST R 51330.1, GOST R 51330.8-99, GOST R IEC 61241-1-1-99.

Product approved for IECEx Scheme following IEC 61241-0, 61241-1: II2D, tD A21 IP66 (Temperature class detailed in table).

In compliance with all applicable European Directives.

* Working Moment = 2 x Static Moment. Static Moment = Unbalance.
For 230 V, 60 Hz amperage, double the 460 V, 60 Hz amperage.

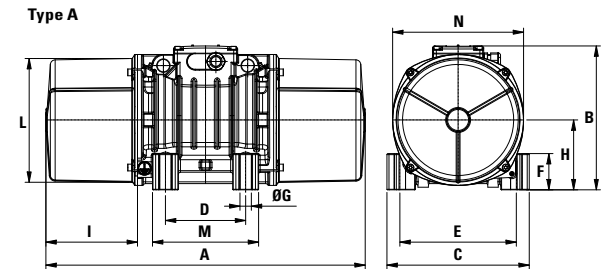
MVSI 36 ELECTRIC VIBRATOR SERIES

three-phase

2 poles		
Hz	50	60
RPM	3000	3600



Model	Design	Type	OVERALL DIMENSIONS (inches)												
			A	B	C	D	E	Foot holes øG N°	F	H	I	L	M	N	
MVSI 36-380	S02	A	8.31	6.02	4.92	2.44-2.91**	4.17	0.35	4	0.94	2.40	1.81	4.06	3.94	4.61
MVSI 36-480	S02	A	9.25	6.02	4.92	2.44-2.91**	4.17	0.35	4	0.94	2.40	2.28	4.06	3.94	4.61
MVSI 36-660	S02	A	10.04	7.05	5.98	3.54	4.92	0.51	4	1.10	2.87	2.13	5.00	5.04	5.55
MVSI 36-1050	S02	A	11.34	7.99	6.57	4.13	5.51	0.51	4	1.18	3.25	2.56	5.71	5.51	6.30
MVSI 36-1500	S02	A	11.34	7.99	6.57	4.13	5.51	0.51	4	1.18	3.25	2.56	5.71	5.51	6.30
MVSI 36-1680	S02	A	12.13	8.50	8.07	4.72	6.69	0.67	4	1.77	3.68	2.48	6.69	6.30	7.17
MVSI 36-2530	S02	A	17.13	8.86	8.07	4.72	6.69	0.67	4	2.13	4.11	4.63	7.36	6.38	7.99
MVSI 36-2900	S08	A	14.76	8.52	8.46	3.94	7.09	0.67	4	1.85	3.68	4.17	6.69	5.71	7.17
MVSI 36-3500	S08	A	14.76	8.52	8.46	3.94	7.09	0.67	4	1.85	3.68	4.17	6.69	5.71	7.17
MVSI 36-3280	S02	A	16.93	9.69	9.06	5.51	7.48	0.67	4	2.13	4.57	3.90	8.15	7.48	8.86
MVSI 36-4080	S02	A	16.93	9.69	9.06	5.51	7.48	0.67	4	2.13	4.57	3.90	8.15	7.48	8.86
MVSI 36-4100	S90	A	18.31	9.06	9.06	5.51	7.48	0.67	4	1.93	4.09	4.13	7.32	7.09	7.87
MVSI 36-4910	S90	A	18.31	9.06	9.06	5.51	7.48	0.67	4	1.93	4.09	4.13	7.32	7.09	7.87
MVSI 36-6860	S02	A	22.05	11.42	12.20	6.10	10.04	0.98	4	3.54	5.12	5.39	9.37	8.27	9.96
MVSI 36-8240	S02	A	22.05	11.42	12.20	6.10	10.04	0.98	4	3.54	5.12	5.39	9.37	8.27	9.96
MVSI 36-11000	S02	A	22.05	11.42	12.20	6.10	10.04	0.98	4	3.54	5.12	5.39	9.37	8.27	9.96
MVSI 36-14000	S02	A	26.77	14.57	15.35	7.87	12.60	1.10	4	3.54	7.09	6.30	12.99	10.63	13.78
MVSI 36-20000	S90	A	24.76	15.55	15.43	7.87	12.60	1.10	4	3.94	7.56	5.31	13.98	10.63	14.76



** Slot.

Several sizes are available with different mounting bolt patterns. Please contact Houston Vibrator for available options.